

For patients and caregivers



## GET MORE OF WHAT MATTERS WITH ZOKINVY®

A guide to help patients and caregivers manage Hutchinson-Gilford Progeria Syndrome (Progeria) and processing-deficient Progeroid Laminopathies (PDPL)

Michiel from Belgium, at 27 years of age, in 2025. He has been taking Zokinvy since he was 8 years old. Photo courtesy of The Progeria Research Foundation.

### WHAT IS ZOKINVY® (lonafarnib)?

ZOKINVY (zoh-KIN-vee) is a prescription medicine used to treat Hutchinson-Gilford Progeria Syndrome and some types of Progeroid Laminopathies known as processing-deficient Progeroid Laminopathies. These illnesses are caused when the body makes harmful proteins called progerin and progerin-like proteins.

When used for Progeroid Laminopathies, ZOKINVY is only for those Progeroid Laminopathies associated with the production of these harmful irregular (progerin-like) proteins.

 **Zokinvy**®  
(lonafarnib)  
capsules 50 mg/75 mg

Please see Important Safety Information throughout and on pages 9 and 10, and full Prescribing Information at [Zokinvy.com](https://www.zokinvy.com)

## Table of contents

	Summary .....	3
	Introducing Zokinvy <sup>®</sup> .....	4
	Effectiveness .....	5
	Safety .....	6
	Taking Zokinvy .....	7
	Getting support .....	8
	Important Safety Information .....	9

## Welcome to the Zokinvy<sup>®</sup> Guide for Patients and Caregivers

Inside, you will find detailed information to support the following key points:



Progeria and processing-deficient Progeroid Laminopathies (PDPL) are diseases people are born with. In both diseases, genetic mutations cause harmful proteins to build up within the cells of the body. This results in premature aging, with the average age of survival being 14.6 years.



Zokinvy is the first and only treatment that targets the cause and symptoms of Progeria and PDPL.



Zokinvy adds years to young people's lives and improves symptoms of Progeria and PDPL, empowering them to do more of what matters most.



The most commonly reported side effects were mild to moderate vomiting, diarrhea, infection, and nausea. Most adverse reactions occurred within the first 2 weeks of starting Zokinvy. After 4 months of treatment, the number of adverse reactions decreased by 70%-80%.



Zokinvy capsules are taken twice a day with meals, with flexible options to fit your family member's needs.



Sentynl Therapeutics, Inc. offers co-pay, reimbursement, and access support for patients through Sentynl Cares | Zokinvy, our provider and patient support center.

### IMPORTANT SAFETY INFORMATION

Do not take ZOKINVY if you are taking:

- a strong CYP3A inhibitor
- a strong or moderate CYP3A inducer
- midazolam
- lovastatin, simvastatin, or atorvastatin

Tell your healthcare provider about all the medicines you take, including prescription and over-the-counter medicines, vitamins, and herbal supplements. ZOKINVY and other medicines may affect each other, causing serious side effects. Talk with your healthcare provider before taking any new medicines.

Please see Important Safety Information throughout and on pages 9 and 10, and full Prescribing Information at [Zokinvy.com](https://www.zokinvy.com)

## About Progeria and PDPL

Progeria, also known as Hutchinson-Gilford Progeria Syndrome, and PDPL are chronic disorders caused by genetic mutations that make harmful proteins that build up in cells over time.

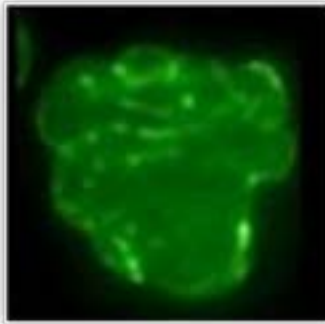
The buildup of these proteins leads to the symptoms of Progeria and PDPL. For example, protein buildup in arteries can cause high blood pressure, and buildup in the heart can cause heart disease or heart attack. Young people with Progeria age at a rapid rate, 8 to 10 times faster than healthy people of the same age.

## How Zokinvy works

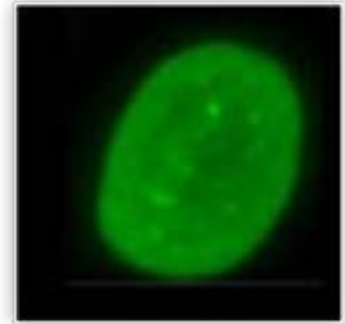
Zokinvy is the first and only treatment that targets the cause and symptoms of Progeria and PDPL. It interrupts a key step in the disease process, helping to block progerin and progerin-like proteins from building up and damaging cells.



Healthy cell



Progeria cells contain abnormal protein



Cells treated with Zokinvy block accumulation of abnormal protein

Photos courtesy of The Progeria Research Foundation

### IMPORTANT SAFETY INFORMATION

**ZOKINVY can cause a change in the electrical activity of your heart called QT prolongation, which can cause irregular heartbeats and may lead to death.** Your health care provider should perform an imaging test called an electrocardiogram (ECG) before starting ZOKINVY and during treatment as needed. Tests to check the levels of your blood potassium, calcium, and magnesium should also be performed before starting treatment and regularly while on Zokinvy. Tell your healthcare provider right away if you feel dizzy, lightheaded, faint, or have a change in your heartbeat (a fast or irregular heartbeat).

**Before taking ZOKINVY, tell your healthcare provider about all of your medical conditions, including if you:**

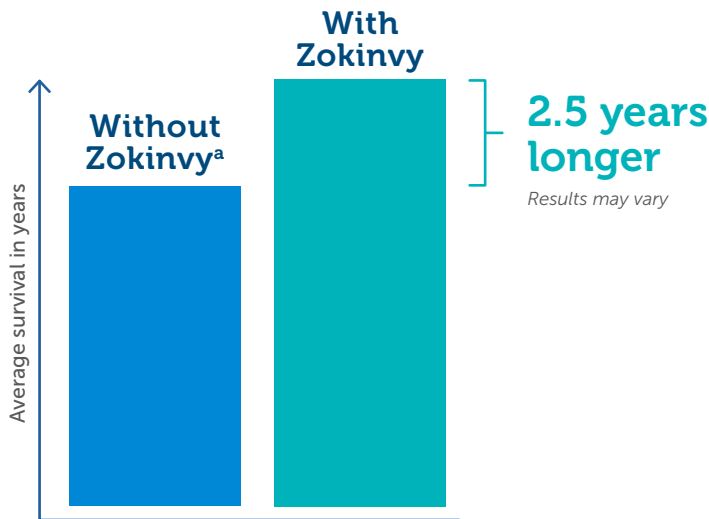
- have kidney problems.
- have eye problems.
- are pregnant or plan to become pregnant. ZOKINVY can harm your unborn baby. Women who are able to become pregnant should use effective birth control (contraception) during treatment with ZOKINVY.
- are breastfeeding or plan to breastfeed. It is not known if ZOKINVY can pass into your breast milk. Talk to your healthcare provider about the best way to feed your baby during treatment with ZOKINVY.

Do not give ZOKINVY to children under the age of 12 months because it has not been studied in this age group.

Please see Important Safety Information throughout and on pages 9 and 10, and full Prescribing Information at [Zokinvy.com](https://www.zokinvy.com)



# Zokinvy<sup>®</sup> adds years to young people’s lives and improves symptoms of Progeria and PDPL, empowering them to do more of what matters most



*Results may vary*

Zokinvy **extended life by an average of 2.5 years** (over the course of 11 years) in young people with Progeria or PDPL.

Young people who received Zokinvy had lower blood pressure and lower risk of heart damage.

- The earlier Zokinvy was given, the greater the benefit

<sup>a</sup>Based on historical control patient data identified from The Progeria Research Foundation International Registry.

**Zokinvy was shown to reduce or delay the effects of many symptoms of Progeria and PDPL, including heart and bone problems**



**With the chance for a longer life, you can do more than you had ever imagined.**

## IMPORTANT SAFETY INFORMATION

### How should I take ZOKINVY?

- Take ZOKINVY exactly as your healthcare provider tells you to.
- Do not stop taking ZOKINVY without talking to your healthcare provider. Your healthcare provider may change your dose of ZOKINVY if needed.
- Your healthcare provider will provide you with the dose you should be taking. The dose is based on body size (height and weight).
- Take ZOKINVY 2 times a day with food.
- Swallow ZOKINVY capsules whole with an adequate amount of water. **Do not** chew ZOKINVY capsules.
- If you or your child cannot swallow the ZOKINVY capsule whole, see the detailed **Instructions for Use** that comes with ZOKINVY for information about how to prepare and give or take a dose of ZOKINVY by mixing the contents of a ZOKINVY capsule with either Ora-Blend SF, Ora-Plus, orange juice, or applesauce.

Please see Important Safety Information throughout and on pages 9 and 10, and full Prescribing Information at [Zokinvy.com](http://Zokinvy.com)

## Zokinvy<sup>®</sup> has well-understood risks and most common side effects can be successfully managed

Zokinvy has a well-studied safety and tolerability profile in young people 12 months of age and older with Progeria or PDPL

- In clinical trials, young people receiving Zokinvy experienced mild to moderate diarrhea and vomiting, decreased appetite, and nausea.
- Gastrointestinal side effects can be successfully managed with supportive care and generally decreased over time.
- Side effects occurred most often during the first month of treatment.



**Eighty-four young people** with Progeria or PDPL participated in clinical trials of Zokinvy; **only 4 discontinued** due to side effects

**Zokinvy dosage can be adjusted to manage side effects.**





## Zokinvy capsules are taken twice a day with meals, with flexible options to fit your family member's needs

Zokinvy is available in 50-mg and 75-mg capsules to provide options for starting and maintenance dosing

The contents of Zokinvy can be mixed with Ora-Blend SF® or Ora-Plus®.

- If your family member cannot access or tolerate Ora-Blend SF or Ora-Plus, you can mix the contents of Zokinvy capsules with orange juice or applesauce.
- Do not mix Zokinvy with any juice containing grapefruit or Seville oranges.



### IMPORTANT SAFETY INFORMATION

#### How should I take ZOKINVY? (cont'd)

- Each dose of ZOKINVY mixture must be prepared fresh and taken within about 10 minutes of mixing.
- **Do not** take ZOKINVY with any juice that contains grapefruit or Seville oranges. Seville oranges may also be called bitter or sour oranges.
- If you miss a dose of ZOKINVY, take it as soon as possible up to 8 hours before your next scheduled dose with food. If it is less than 8 hours before your next dose of ZOKINVY, skip the missed dose and take ZOKINVY at your next regularly scheduled dose.

Please see Important Safety Information throughout and on pages 9 and 10, and full Prescribing Information at [Zokinvy.com](http://Zokinvy.com)

## Sentynl Cares | Zokinvy<sup>®</sup> provides personalized care and financial support, including reimbursement assistance

Sentynl Cares | Zokinvy is staffed with experts in Progeria and PDPL, offering a dedicated, specialized team focused on your family member's care



Sentynl Cares | Zokinvy provides access to healthcare providers, nurses, pharmacists, reimbursement specialists, appeals specialists, alternate funding, co-pay assistance, and educational materials.

Your specialized Zokinvy<sup>®</sup> support team can help

- Investigate your insurance coverage
- Assist with financial support options
- Connect you to the Zokinvy pharmacy



Contact Sentynl Cares | Zokinvy

Call 1-888-251-2800

Monday through Friday, 8 AM-8 PM ET



### WHAT IS ZOKINVY<sup>®</sup> (lonafarnib)?

ZOKINVY (zoh-KIN-vee) is a prescription medicine used to treat Hutchinson-Gilford Progeria Syndrome and some types of Progeroid Laminopathies known as processing-deficient Progeroid Laminopathies. These illnesses are caused when the body makes harmful proteins called progerin and progerin-like proteins.

When used for Progeroid Laminopathies, ZOKINVY is only for those Progeroid Laminopathies associated with the production of these harmful irregular (progerin-like) proteins.

### IMPORTANT SAFETY INFORMATION

Do not take ZOKINVY if you are taking:

- a strong CYP3A inhibitor
- a strong or moderate CYP3A inducer
- midazolam
- lovastatin, simvastatin, or atorvastatin

**Tell your healthcare provider about all the medicines you take, including prescription and over-the-counter medicines, vitamins, and herbal supplements.** ZOKINVY and other medicines may affect each other, causing serious side effects. Talk with your healthcare provider before taking any new medicines.

**ZOKINVY can cause a change in the electrical activity of your heart called QT prolongation, which can cause irregular heartbeats and may lead to death.** Your health care provider should perform an imaging test called an electrocardiogram (ECG) before starting ZOKINVY and during treatment as needed. Tests to check the levels of your blood potassium, calcium, and magnesium should also be performed before starting treatment and regularly while on Zokinvy. Tell your healthcare provider right away if you feel dizzy, lightheaded, faint, or have a change in your heartbeat (a fast or irregular heartbeat).

**Before taking ZOKINVY, tell your healthcare provider about all of your medical conditions, including if you:**

- have kidney problems.
- have eye problems.
- are pregnant or plan to become pregnant. ZOKINVY can harm your unborn baby. Women who are able to become pregnant should use effective birth control (contraception) during treatment with ZOKINVY.
- are breastfeeding or plan to breastfeed. It is not known if ZOKINVY can pass into breast milk. Talk to your healthcare provider about the best way to feed your baby during treatment with ZOKINVY.

Do not give ZOKINVY to children under the age of 12 months because it has not been studied in this age group.

### How should I take ZOKINVY?

- Take ZOKINVY exactly as your healthcare provider tells you to.
- Do not stop taking ZOKINVY without talking to your healthcare provider.
- Your healthcare provider may change your dose of ZOKINVY if needed.
- Your healthcare provider will provide you with the dose you should be taking. The dose is based on body size (height and weight).
- Take ZOKINVY 2 times a day with food.
- Swallow ZOKINVY capsules whole with an adequate amount of water. Do not chew ZOKINVY capsules.
- If you cannot swallow the ZOKINVY capsule whole, see the detailed Instructions for Use that comes with ZOKINVY for information about how to prepare and give or take a dose of ZOKINVY by mixing the contents of a ZOKINVY capsule with either Ora-Blend SF, Ora-Plus, orange juice, or applesauce.



- Each dose of ZOKINVY mixture must be prepared fresh and taken within about 10 minutes of mixing.
- **Do not** take ZOKINVY with any juice that contains grapefruit or Seville oranges. Seville oranges may also be called bitter or sour oranges.
- If you miss a dose of ZOKINVY, take it as soon as possible up to 8 hours before your next scheduled dose with food. If it is less than 8 hours before your next dose of ZOKINVY, skip the missed dose and take ZOKINVY at your next regularly scheduled dose.

### What are the possible side effects of ZOKINVY?

ZOKINVY may cause serious side effects, including:

**Severe kidney problems.** ZOKINVY may cause severe kidney problems. Your healthcare provider will monitor your kidney function regularly during treatment with ZOKINVY.

**Eye problems.** ZOKINVY may cause problems with night vision. Call your healthcare provider right away if you develop any new changes in your vision.

The most common side effects of ZOKINVY include:

- vomiting
- decreased appetite
- stomach-area (abdominal) pain
- increased liver enzyme blood test results
- constipation
- infection
- diarrhea
- nausea
- tiredness
- weight loss
- muscle and joint (musculoskeletal) pain

Call your healthcare provider if you continue to have nausea, vomiting, or diarrhea that leads to loss of appetite and weight loss during your treatment with ZOKINVY. ZOKINVY may cause an increase in your blood pressure (hypertension). Your healthcare provider will check your blood pressure during treatment with ZOKINVY. Call your healthcare provider right away if you develop any symptoms of high blood pressure including headaches, shortness of breath, nosebleeds, flushing, tiredness, dizziness, vision problems, irregular heartbeat, or chest pain.

ZOKINVY may cause fertility problems in women and men, which may affect your ability to have children. Talk to your healthcare provider if you have concerns about fertility. These are not all of the possible side effects of ZOKINVY.

Please call your doctor for medical advice about side effects. You are also encouraged to report side effects to FDA at 1-800-FDA-1088.

**For more information, please see the full Prescribing information, including the Patient Information.**